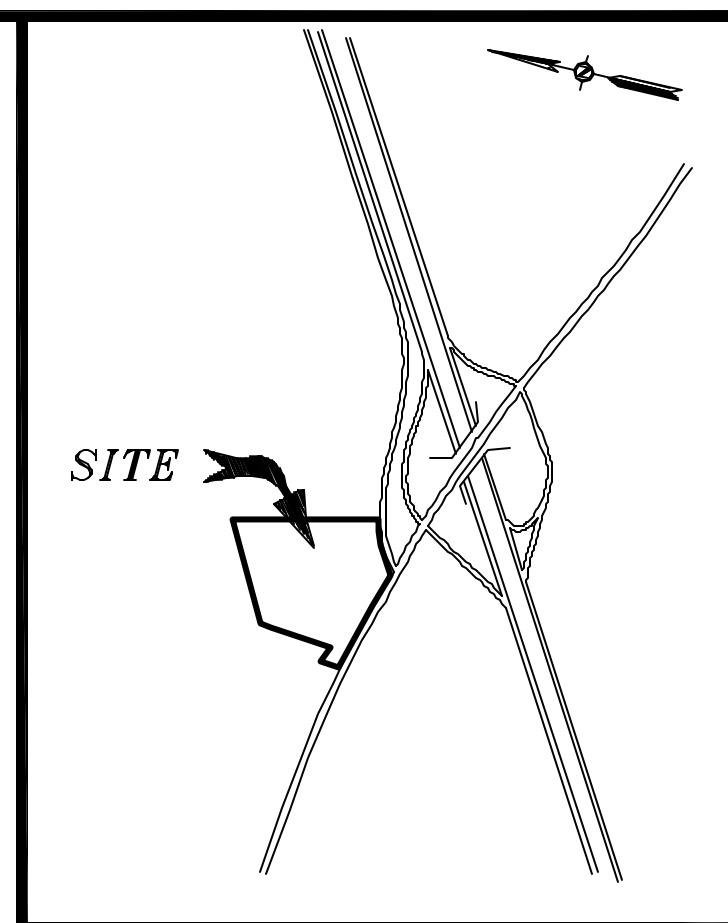
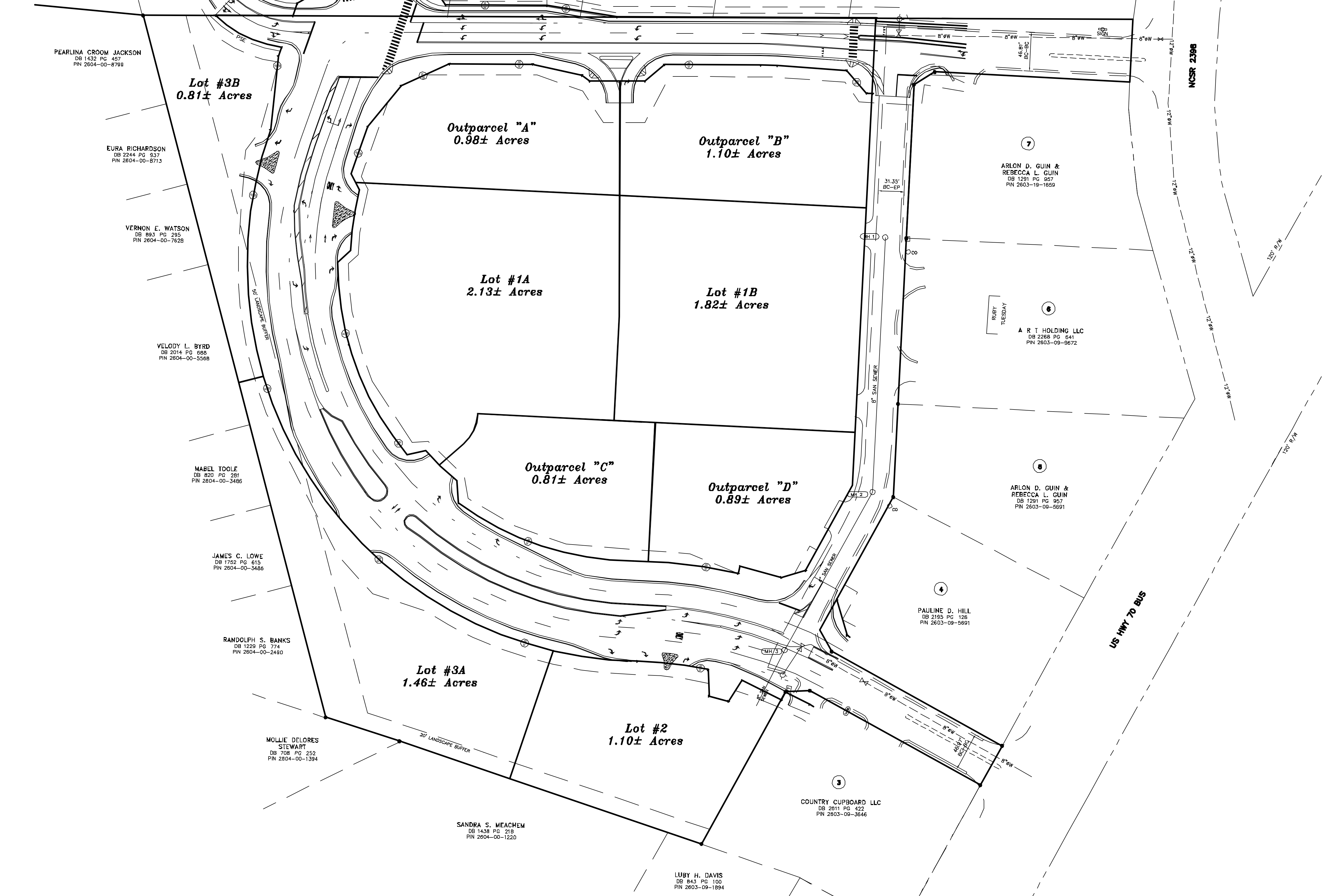


- LEGEND**
- EXISTING IRON PIPE
 - NEW IRON PIPE
 - COMPUTED POINT
 - EXISTING CONCRETE MONUMENT
 - NEW CONCRETE MONUMENT
 - ▲ EXISTING PK NAIL
 - ▲ NEW PK NAIL
 - N.C.G.S. MONUMENT
 - ⊕ BENCH MARK
 - ⊕ EXISTING RAILROAD SPIKE
 - ⊕ NEW RAILROAD SPIKE
 - ⊕ EXISTING SPOT ELEVATION
 - ⊕ PROPOSED SPOT ELEVATION
 - EXISTING AXLE



Vicinity Map
Not to Scale

SITE DATA

LOT AREA 15.90 AC.
 ZONE B-3 SUD
 PIN

SETBACK REQUIREMENTS

FRONT 50'
 SIDE 15'
 ST. SIDE 35'
 REAR 25'

PRELIMINARY PLAT
 (NOT FOR CONVEYANCE OR SALES)



P:\04PROJ\4279\4279-LDD\dwg\4279-C SKETCH PLANT - new.dwg 2/12/2010 12:11:23 PM ES

Herring-Sutton & Associates, P.A.
 Engineers - Surveyors - Planners
 2201 Nash Street NW, Wilson, North Carolina 27896 (252) 291-8887

SMITHFIELD CROSSING
TOWN OF SMITHFIELD, JOHNSTON CO., NC

Conceptual Plan
February 12, 2010

Revision	Date	By	Date
			DECEMBER 2009
			Scale : Map No.
			1" = 60' 04-4279 C
			Sheet No. SKP-1 of 1